

GILGANDRA PUBLIC SCHOOL

GRAPEVINE



Term 4

Success through diversity, participation and care

16th October 2018

PRINCIPAL: Patricia Howard, Telephone: 6847 2043 Fax: 6847 2304

Email: gilgandra-p.school@det.nsw.edu.au

School Website: www.gilgandra-p.schools.nsw.edu.au

P & C President: Libby Carr

FOR YOUR DIARY

OCT

Fri 19th Kindergarten Excursion-Warrumbungle National Park

Fri 19th Final Payment Due for ZooSnooZ Year 3 & 4

Mon 22nd Early Birds First day. 9:15am - 12:30pm

Mon 29th Year 3&4 Excursion-Overnight Taronga Western Plains Zoo

Wed 31st Parent talk on Cyber Security and Keeping Kids Safe Online

Welcome Back to Term 4

Gilgandra Public School Staff trust that everyone has had a relaxing and enjoyable break over the last two weeks. We are all looking forward to an exciting term of learning activities both in and out of the classroom. There are lots of great events happening this term including Kindergarten's excursion to the Warrumbungle on October 19th and Years 3 and 4 overnight stay at the Zoo October 29th.

Intention to apply for Year 7 entry to a selective high school in 2020

Selective high schools cater for high achieving academically gifted students who may otherwise be without sufficient classmates at their own academic and social level. These schools help gifted and talented students to learn by grouping them with other gifted and talented students, teaching them in specialised ways and providing educational materials at the appropriate level.

Applications for selective high school placement are considered mainly on the basis of the Selective High School Placement Test results and school assessment scores. The Selective High School Placement Test will be held on **Thursday 14 March 2019**.

If you would like your child to be considered for Year 7 selective high school entry in 2020, you need to apply on the internet using a valid email address. Detailed instructions on how to apply are available at <https://education.nsw.gov.au/public-schools/selective-high-schools-and-opportunity-classes/year-7>. The application website opens at the link on **9 October 2018** and closes on **12 November 2018**. **You must apply before the closing date.** There are no paper application forms.

Student Banking

Student Banking will continue to be conducted each Wednesday in Term 4. If you would like any information regarding Student Banking, please come and see us at the office.

Summer Uniform

Now that the weather is warming up - it is essential that all students wear a hat to school. Hats must be worn in all outside play including Morning, Lunch, Recess and PE. Lion tokens will be awarded at morning assembly for classes who are all wearing a hat. Please ensure all hats are clearly labelled with students name. New Summer Dresses are available to purchase from the office. They are \$30.

GILGANDRA PUBLIC SCHOOL EARLY BIRD PROGRAM



Starts: Monday 22 October, 2018
Finishes: Monday 26th November, 2018



When: 9.15am - 12.30pm each Monday

Meet: Library

Pick Up: Library. Every child must be picked up by a parent/carer at 12.30pm. If someone else is to pick up your child please let the teacher know or send a written note.

Enrolment Forms: These must be completed and returned to the front office or the teacher on or before the first day of attendance, together with Birth Certificate or other evidence of date of birth and Immunisation Certificate.

What to Wear: Casual clothes (NOT school uniform), Hat

Special Needs: If your child has any special needs, allergies etc. please let the school know before the start of the Early Bird program.

Lunch: Our lunch time is from 11.15—12.00 noon.

Please send your child with water, lunch and fruit for Crunch & Sip. Please do not send lollies or chocolates to school. Lunches may be ordered at the canteen.

Please send your child with a bag so that notes, class work, as well as lunches, can be carried.



P & C Fundraising Billy G's Gourmet Cookie Dough!

Choose from a selection of 10 flavours, available in 1kg Tubs. Cookie Dough can be frozen or kept in the fridge. Stock up for the Holidays and the perfect gift. Keep your eyes out for order forms going out this week. All money raised will go back to the school to purchase things for the students. Order Forms due back November 7th.



Year 1 & 2 Warrumbungle National Park

September 27th 2018



On Thursday of last Term Stage 1 students travelled to the Warrumbungle National Park for their annual excursion. The students did lots of walking around various tracks, locating things such as signs and landforms. They also checked the wind direction and temperature in different places. Some of the tracks were very tricky and the students had to work hard not to fall off.

The day finished with a big climb to the top of a lava pile to get a great view of the mountains. Everyone had a wonderful day but were very tired on the bus trip home!



Visit our Facebook page



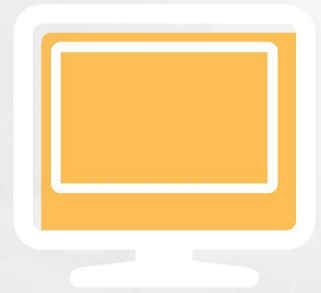
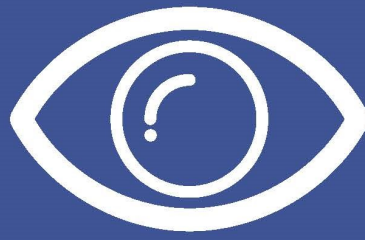
Welcome Back to Term 4! Ethan Moody, Lorelai Hawke, Chloe Eason, Imogen Johnson and Wyatt Wieland excited to be back after the Holidays.



Imogen Johnson, Chloe Eason and Paige Luckie wearing the new Summer Dresses. Available for purchase from the office.



[Visit our Facebook page](#)



GILGANDRA PUBLIC SCHOOL

CYBER SECURITY AND KEEPING KIDS SAFE ONLINE PARENT TALK

Open for all Gilgandra Public And High School Parents

WEDNESDAY 31ST OCTOBER 2018

9.15AM - 10.15AM

GILGANDRA PUBLIC SCHOOL HALL

FACILITATED BY MARTIN PAICE SENIOR CONSTABLE
(SCHOOL LIAISON POLICE, YOUTH AND CRIME PREVENTION COMMAND)

Topics – Facebook, the Good, the Bad and the Ugly; Popular Apps - Musical.ly, Snapchat and Instagram;
Stranger Danger Online; Warning Signs and what to do.

