



# **Gilgandra Public School**

## **Honesty & Courtesy**



**Safe, Respectful, Learners**

Principal  
Patricia Howard

P.O Box 19  
Gilgandra NSW 2827  
Email: [gilgandra-p.school@det.nsw.edu.au](mailto:gilgandra-p.school@det.nsw.edu.au)

Tel: 02 6847-2043  
Fax: 02 6847-2304

Kindergarten 2020 Best Start

30 January 2020

## **Best Start Kindergarten Assessment Information for parents and carers**

The Best Start Kindergarten Assessment will take place at our school in Term 1 on Monday 10 and Tuesday 11 January.

The Best Start Kindergarten Assessment is a state-wide assessment that helps show teachers the literacy and numeracy skills of each student at the beginning of Kindergarten. This helps teachers to plan lessons to best support the learning needs of every child.

Children come to school with a range of experiences, skills and abilities. Some are familiar with books, can recognise letters of the alphabet or even write their name or count to ten, while others have not yet learned these skills.

The Best Start Kindergarten Assessment provides teachers with the opportunity to sit with a child one on one, focusing on what that child can do.

The assessment is not a test but provides teachers with useful information to help support your child's learning at school.

The attached information sheet provides further information on the Best Start Kindergarten Assessment.

Please contact the school if you have any questions regarding the Best Start Kindergarten Assessment.

Yours Sincerely

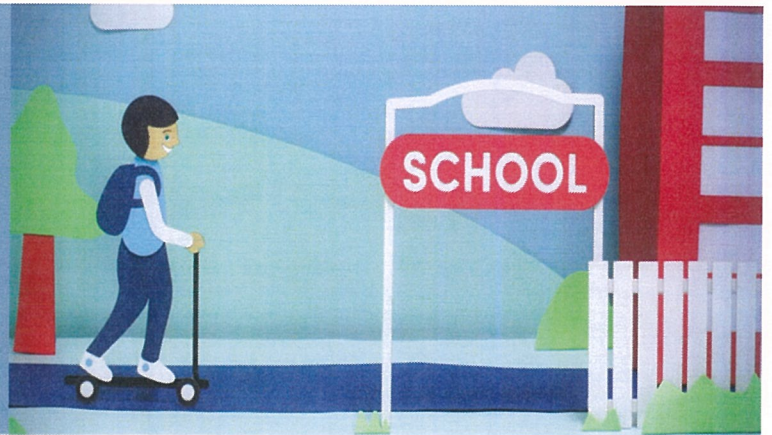
Patricia Howard

Principal

# Best Start Kindergarten Assessment

## A parent and carer's guide to the assessment

Best Start Kindergarten Assessment is a state-wide assessment that helps teachers identify the literacy and numeracy skills of each student at the beginning of Kindergarten.



Children start school with a range of early literacy and numeracy knowledge, skills and understandings. Many students are already engaging with the world around them to express their ideas. Many students start school knowing a range of things about numbers, patterns and basic mathematical ideas.

The Best Start Kindergarten Assessment is a state-wide assessment that helps teachers identify the literacy and numeracy skills of each student at the beginning of Kindergarten. The assessment provides teachers with information on how to best support each student's needs at school. It consists of both a literacy and numeracy component.

The Best Start Kindergarten Assessment supports teachers to develop teaching and learning programs that build upon what students know and can do. Teachers sit with the child one on one focussing on what they can do. The assessment does not require any preparation.

Teachers will provide parents and carers with information about the skills their child demonstrated during the assessment. All children learn at different rates and parents do not need to be concerned if their child can't answer all of the questions.

Parents and carers will receive information about Best Start when enrolling in their local public school.

### Literacy assessment

The literacy tasks are designed to identify whether students can recognise familiar words, recall details about a picture book that has been read to them, write their name, understand how books work and recognise sounds and letters.

During the literacy assessment the teacher will ask questions like:

- 'Listen to these words: map, tap. Can you think of another word that rhymes?'
- Read a story book to the child and ask: 'Can you tell me about the story that I just read to you?'

These questions will assist the teachers in determining if a student can recognise familiar print and recall information from a picture book. These are important literacy skills that children will develop over their first year at school.

### Numeracy assessment

The numeracy tasks are related to early number concepts and are designed to identify how well a student can count; which numbers they can recognise; whether they can count a number of objects, add or subtract small numbers; and recognise repeating patterns.

During the numeracy assessment the teacher will ask questions like:

- 'Start counting and I'll tell you when to stop.'
- 'Can you tell me what number this is?' 5

These questions will assist the teachers in determining if the student can recognise numbers and count from one onwards. Throughout Kindergarten students will learn to recognise numbers 1-100 and count to 30.

**For more information about the Best Start Kindergarten assessment contact your child's school.**