

# Gilgandra Public School

Safe, Respectful, Learners



Principal  
Michael Darcy

Phone: 02 68472 043 Email: [gilgandra-p.school@det.nsw.edu.au](mailto:gilgandra-p.school@det.nsw.edu.au)

---

1/02/24

Dear parents and carers,

The Best Start Kindergarten Assessment will commence at our school in Week 2, Term 1.

The Best Start Kindergarten Assessment is a state-wide assessment that helps show teachers the literacy and numeracy skills of each student at the beginning of kindergarten. This helps teachers to plan lessons to best support the learning needs of every child.

Children come to school with a range of experiences, skills and abilities. Some are familiar with books, can recognise letters of the alphabet or even write their name or count to ten, while others have not yet learned these skills.

The Best Start Kindergarten Assessment provides teachers with the opportunity to sit with a child one on one, focusing on what that child can do. The assessment is not a test but provides teachers with useful information to help support your child's learning at school.

If you wish to withdraw your child from participating in the assessment, please contact the school. The attached information sheet provides further information on the Best Start Kindergarten Assessment.

Please contact the school if you have any questions regarding the Best Start Kindergarten Assessment.

**Telephone Interpreter Service:**

If you need an interpreter to assist you to contact the school, please call the Telephone Interpreter Service on 131 450 and ask for an interpreter in your language. The interpreter will call the school and will stay on the line to assist with the conversation. You will not be charged for this service.

Yours sincerely,

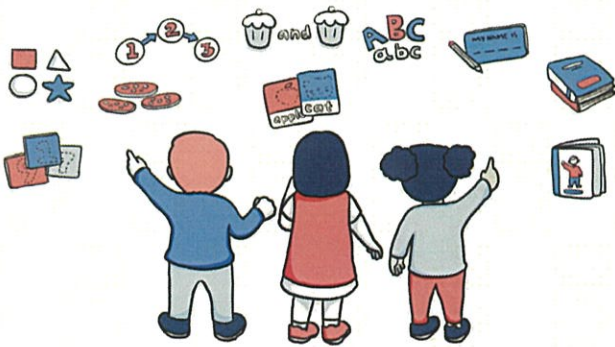
  
Michael Darcy

Principal

# Best Start Kindergarten Assessment

A guide for parents and carers

**The Best Start Kindergarten Assessment is a state-wide assessment that helps teachers identify the literacy and numeracy skills of each student at the beginning of Kindergarten.**



Children start school with a range of early literacy and numeracy skills, knowledge and understandings developed from connecting with the world and people around them. The Best Start Kindergarten Assessment includes a literacy and numeracy component and provides teachers with information on a student's individual strengths and needs.

The assessment supports teachers to develop teaching and learning programs that build on what students know. Teachers sit with each student individually, focusing on what they can do. Your child does not need to prepare or study for the assessment. As children learn at different rates there is no need to be concerned if your child cannot answer all questions.

Shortly after the assessment, teachers will provide you with information about the skills, knowledge and understandings your child demonstrated during the assessment.

The Best Start Kindergarten Assessment is inclusive of all students. If English is not your home language or your child requires adjustments, contact your school for more information on how your child can be supported.

## Literacy assessment

The literacy tasks are designed to identify whether students can write their name, recognise sounds, letters and familiar words, understand how we use books and recall details about a short book that has been read to them.

During the literacy assessment the teacher will ask your child questions like:

- 'Listen to these words: map, tap. Can you think of another word that rhymes?'
- (after reading a short book) 'Can you tell me about the story that I just read to you?'

These questions help teachers determine if your child can recognise words that sound the same and recall information from a short book read to them. These are important literacy skills that children will develop over their first year at school.

## Numeracy assessment

The numeracy tasks are related to early number concepts and are designed to identify how well a student can count, which numbers they can recognise, whether they can count objects, add or subtract small numbers and recognise repeating patterns.

During the numeracy assessment the teacher will ask your child questions like:

- 'start counting from one and I'll tell you when to stop'
- 'can you tell me what number this is?' (5)

These questions will help teachers determine if your child can recognise numbers and count from one onwards. These are important numeracy skills that children will develop over their first year at school.

**For more information about the Best Start Kindergarten Assessment, contact your child's school.**

If you require an interpreter, contact the Telephone Interpreter Service on 131 450. They can arrange for an interpreter in your language to assist the conversation with the school. You will not be charged for this service.